

TRAFIC (X82) PHASE 2

6_MECHANICAL CONVERSIONS

6.1. ADDITIONAL COMPONENTS ON ACCESSORIES SIDE:

There is no PFMOT option on the M9R engine.

Drawing for a fridge compressor is only possible on an engine WITHOUT air conditioning.

The addition of a mechanical compressor is not compatible with an automatic gearbox.



As all vehicles are equipped with “stop&start”, it is recommended to take the “accelerated idle” option controlled by the activation of the conversion (see “Stop & Start” and “IDLE” sheets)

6.1.1. ADDITIONAL COMPONENTS ON ACCESSORIES SIDE:

6.1.1.1 EURO-DTEMP engines

The max dimension of the additional compressor is QP 15 or TM 15 (architecture: compatible with engine footprint and the forces applied to the belt).

The additional compressor is mounted on a special bracket. An adaptor kit is available from OLIVA TORRAS.

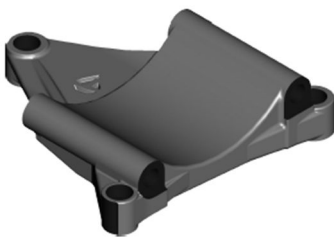


Image of the intermediate bracket included in the OLIVA TORRAS KIT

The original belt must be replaced by a new 7PK belt 1,400 mm long (Supplier: MBL, included in the OLIVA-TORRAS kit under the OLIVA-TORRAS part number: 1260701400).

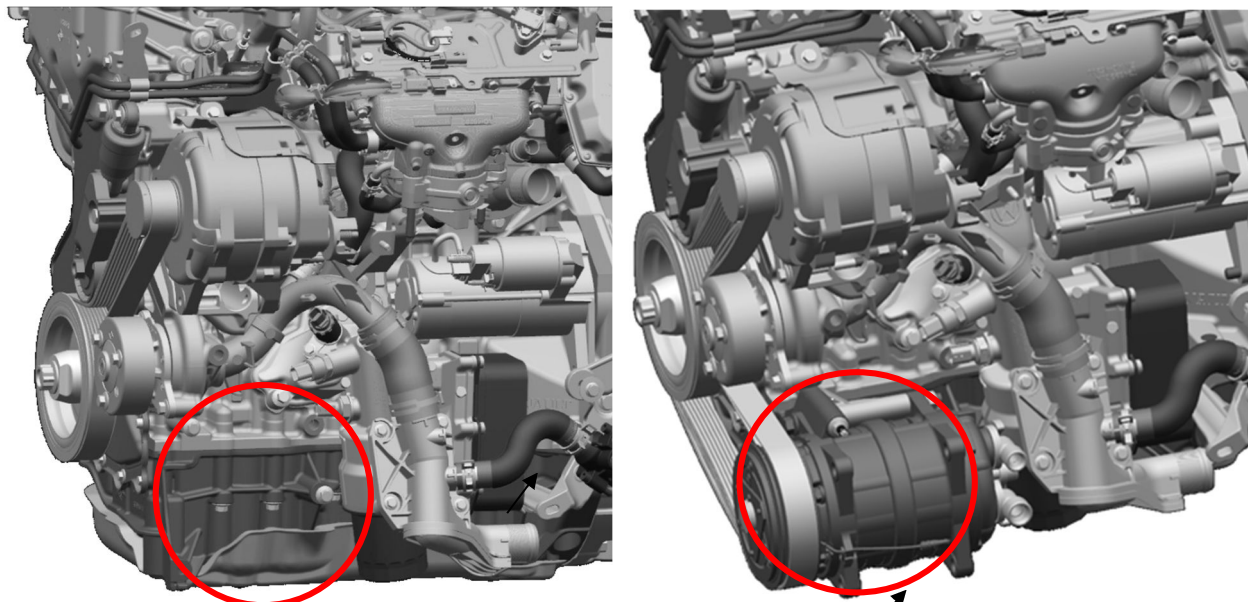
The original tension idler is kept.

IMPORTANT: Always print the complete chapter in the current version

RENAULT TRAFIC Technical Conversion Guide; Status on 08/11/2021 -revision -B

This document is the property of RENAULT SAS and may not be communicated to third parties and/or reproduced without the prior written consent of RENAULT SAS, nor can its content be divulged

Confidential C



Engine without air conditioning

Fridge compressor

6.1.1.2 EURO6DFULL engines

The solution is the same as for EURO6DTEMP engines presented in the paragraph above.

IMPORTANT: Always print the complete chapter in the current version

RENAULT TRAFIC Technical Conversion Guide; Status on 08/11/2021–revision -B

This document is the property of RENAULT SAS and may not be communicated to third parties and/or reproduced without the prior written consent of RENAULT SAS, nor can its content be divulged